



April 2004

# The Bay Leaf

California Native Plant Society • East Bay Chapter • Alameda & Contra Costa Counties

## CALENDAR OF EVENTS

### California Wildflower Show p. 8

Saturday, April 3, from 10 a.m. to 5 p.m. and Sunday, April 4, from noon to 5 p.m., Oakland Museum

### Native Here p. 6

Fridays, April 2, 9, 16, 23, 30: Native Here Nursery open 9-noon

Saturdays, April 3, 10, 17, 24: Native Here Nursery open 10-1

### Plant Sale Activities p. 6

Tuesdays, April 6, 13, 20, 27, 9 am to 2 pm, Merritt College, Oakland

### Native Plant Restoration Team p. 7

Saturday, April 3, 9:30 am - noon. **Mouth of Strawberry Creek, Eastshore State Park**, Berkeley

Saturday, May 1, 9:30 am - noon. **Codornices Creek at Live Oak Park**, Berkeley

### Spring Fairs with CNPS participation p. 5

Saturday and Sunday, April 3 and 4, **Oakland Museum Wildflower Show**

Saturday, April 17, **Regional Parks Botanic Garden Plant Sale** in Tilden Park

Saturday, April 17, **Berkeley Bay Festival**

Saturday, April 24, **West County Earth Day in Richmond**

Saturday, April 24, 12 noon to 5 pm, **Berkeley Earth Day**

April 28 and/or April 29, **Moreau Catholic High School Earth Days in Hayward**

### Field Trips p. 4

Sunday, April 4, 2:00 pm, **Pioneer Tree Trail, Samuel Taylor State Park**

Saturday April 10, 9:30 am, **Warm Springs Vernal Pools in San Francisco Bay National Wildlife Refuge**

Sunday April 11 (Easter) All day trip to **Bear Valley/Carson Ridge in Colusa County**

Sunday, April 18, 2:00 pm: **Mitchell Canyon, Mt. Diablo State Park**

Saturday, April 21, 10-12 am, **Sunol-Ohlone Regional Wilderness**

Sunday, May 2, 2:00 pm: **Bird Trail, Chabot Regional Park**

Saturday, May 15, all day trip to **Mines Road in eastern Alameda County**

### Chapter Board Meeting

Wednesday, April 7, 2004 at 7:30 PM at Laura Baker's home, 79 Roble Road, Berkeley

### Conservation Committee meeting p. 3

Wednesday, April 21, at 7:30 pm, home of Mary Ann Hannon, 309 Pearl Drive, Livermore

### Membership Meeting see below

---

## MEMBERSHIP MEETING

### Speaker: Dr. David Chipping

"The Big Picture: The State CNPS Conservation Program"

Wednesday, April 28, 2004, 7:30 p.m.

Conference Center, University of California Botanical Garden at Berkeley (directions below)

In April, 1999, Dr. David Chipping wrote in *Fremontia* of the "enormous pressure being placed on California's natural resources" and the CNPS conservation

program's strategic and proactive efforts to protect and preserve native plant habitat ("A Growing Conservation Program," Volume 27:2, pp. 11-12). Today, growth and development pressure is yet greater and is compounded by the Bush administration's hostile attitude toward the environment. But the CNPS statewide conservation program has grown as well and carries on a broad range of projects to promote science-based local and regional planning and to preserve or improve existing environmental laws.

continued on page 2

## MEMBERSHIP MEETING

continued from page 1

We are very fortunate to have Dr. Chipping, Conservation Director for the state CNPS organization, as our speaker this month. He will dedicate his presentation to showing the breadth of CNPS's statewide conservation programs as well as their interactions with chapter activities and with broader conservation strategies involving other organizations. Among the many CNPS conservation programs, Dr. Chipping will discuss those involving deserts, forests, vernal pools, wetlands, and habitat conservation plans, as well as issues close to our East Bay home, including bullet train routes across the Diablo Range. In spite of its weighty content, Dr. Chipping's presentation will be fun as well as informative. Come to learn about CNPS's conservation projects and successes and prepare to be inspired.

Before the recent CNPS reorganization that led to his current position as state Conservation Director, Dr. Chipping served for several years as CNPS Director-at-Large and then as Vice President of Conservation. In addition to his state CNPS office, he is Conservation Chair for the San Luis Obispo Chapter. He is also a director and founder of the Morro Estuary Greenbelt

Alliance, which saves habitat around Morro Bay by purchase. And he teaches geology full-time at Cal Poly San Luis Obispo.

East Bay Chapter CNPS membership meetings are free of charge and open to everyone. This month's meeting will take place in the Conference Center of the University of California Botanical Garden on Centennial Drive, east of Memorial Stadium and west of the Lawrence Hall of Science, above the main campus of the University of California in Berkeley. The Garden gate will open at 7:00 p.m.; the meeting begins at 7:30 p.m. Refreshments will be served after the meeting. Please contact Sue Rosenthal, 510-496-6016 or rosacalifornia@earthlink.net if you have any questions.

### Upcoming Programs

Wednesday, May 26, 2004, 7:30 p.m. (at the U.C. Berkeley Botanical Garden):

**Alan Kaplan**—Four-and-a-Half Billion Years of History in Ninety Minutes or Less

*Sue Rosenthal*

---

## RARE, UNUSUAL AND SIGNIFICANT PLANTS

The seventh edition of *Rare, Unusual and Significant Plants of Alameda and Contra Costa Counties* is now available. First published in 1992, it contains a wealth of information on both statewide and locally rare native plant species of the East Bay, ranking them according to their rarity and endangerment at the local level. It has received wide praise for providing invaluable information to land planners and managers, conservationists, consultants, teachers, students, researchers, professional and amateur botanists, and the general public.

This is the only publication addressing the locally rare native plant species of Alameda and Contra Costa Counties covered under the California Environmental Quality Act (CEQA), as well as the federally and state protected species occurring in the two counties.

New features in this seventh edition include:

- 5 color maps, 4 of them of local botanical "hotspots" for A-ranked species
- An update of the dividing year between historical and current records from 1950 to 1975
- The Habitat Appendix has been restored
- Data on 16 species not previously known from Alameda or Contra Costa Counties
- Data on current populations for 14 species

formerly thought extirpated from the two counties

Many other updates and changes are included, and source information has been added to the bibliography. This new edition is sure to be a valuable asset to professionals and amateurs alike. The price is \$20. An order form is provided for your convenience.

Over the last 120 years almost 90 native plant species have disappeared from Alameda and Contra Costa Counties and are presumed extirpated.

But every now and then someone stumbles across a population of one of these species that no one ever knew was there or that had not been reported for 30 years or more. That is why we use the term "presumed" extirpated. We always hold out hope of finding these plants and in the last several years we have rediscovered 11 of these species in our two-county wide area. Although some of the populations have been found in remote areas by some of our more "mountain goat" type volunteers, some have also been found in easier to get to places. They had been overlooked because they were hidden by other vegetation, or are very small plants.

Below is a partial list of plants presumed extirpated from Alameda and Contra Costa Counties. I would like

to encourage everyone to look for these plants. Please contact me (diannelake@yahoo.com) if you see any of these plants in Alameda or Contra Costa County, and record the location (map, GPS coordinates, or detailed description), the date you saw it, how many plants there were, and any threats (weed invasions, insect attacks, foot traffic, etc.).

If you are interested in looking for and monitoring other plants in our two counties, we also have "To Do" lists available for both individual plants and places. Please contact me at the email address above and I will let you know how you can help.

### **A Partial List of Native Plants Presumed Extirpated from Alameda and Contra Costa Counties**

*Abronia latifolia*  
*Abronia umbellata* ssp. *umbellata*  
*Allium peninsulare* var. *peninsulare*  
*Antirrhinum kelloggii*  
*Artemisia pycnocephala*  
*Astragalus nuttallii* var. *nuttallii*  
*Astragalus nuttallii* var. *virgatus*  
*Atriplex californica*  
*Calystegia soldanella*  
*Carex gracilior*  
*Chorizanthe cuspidata* var. *cuspidata*  
*Chorizanthe robusta* var. *robusta*  
*Chorizanthe uniaristata*  
*Convolvulus simulans*  
*Cordylanthus maritimus* ssp. *palustris*  
*Cryptantha hooveri*  
*Cuscuta pentagona*  
*Downingia ornatissima* var. *eximia*  
*Elymus X saundersii*  
*Epilobium cleistogamum*  
*Eremalche parryi* ssp. *parryi*  
*Eriastrum sapphirinum*  
*Eriogonum truncatum*  
*Heterodraba unilateralis*  
*Hierochloa occidentalis*  
*Hoita orbicularis*  
*Hoita strobilina*

### **CONSERVATION COMMITTEE**

On Wednesday, April 21, at 7:30 pm, the Conservation Committee will meet at the home of Mary Ann Hannon, 309 Pearl Drive, Livermore.

This meeting provides an excellent opportunity to learn what the committee is working on and to determine if you'd like to join it. Any member of CNPS is welcome to attend, and current members of the committee are expected to.

The recent election held some blows to the conservation

*Horkelia cuneata* ssp. *sericea*  
*Isocoma arguta*  
*Layia glandulosa*  
*Lepidium oblongum* var. *oblongum*  
*Lepidospartum squamatum*  
*Lessingia hololeuca*  
*Leymus mollis*  
*Linanthus bolanderi*  
*Linum lewisii* var. *lewisii*  
*Lithophragma cymbalaria*  
*Lotus denticulatus*  
*Lotus junceus* var. *bioletti*  
*Lupinus benthami*  
*Lupinus chamissonis*  
*Madia radiata*  
*Malacothrix californica*  
*Meconella californica*  
*Meconella linearis*  
*Mentzelia laevicaulis*  
*Mentzelia pectinata*  
*Mentzelia tridentata*  
*Monardella breweri*  
*Monolopia lanceolata*  
*Montia linearis*  
*Navarretia tagetina*  
*Phalaris angusta*  
*Phalaris californica*  
*Plantago maritima*  
*Platanthera leucostachys*  
*Poa douglasii*  
*Potamogeton zosteriformis*  
*Pyrrocoma racemosa* var. *racemosa*  
*Salvia carduacea*  
*Sanicula arctopoides*  
*Sanicula maritima*  
*Scoliopus bigelovii*  
*Thermopsis macrophylla* var. *macrophylla*  
*Tropidocarpum capparideum*  
*Vancouveria planipetala*

Dianne Lake, Unusual Plants Coordinator

community with the passing of Measure N, and the vote to allow Superstores in Contra Costa County. It is time for everyone passionate about protecting open space and the native plants that grow in it to become active. The more of us there are, the more we can accomplish!

Mary Ann's directions to her home follow: Highway 580 East to Airway Exit. Turn right at light and follow Airway to next stoplight. This street is the Isabel

continued on page 4

Expressway or at least turns into the Expressway, also now Highway 84. Turn right (south) to the Stanley Boulevard exit. You'll be making a left turn at a stop light. Go up to Stanley. Go right for 1 block to Murdell--another stoplight. Turn right. The first right turn off Murdell is Pearl Drive. I live at 309 Pearl Drive. Phone is 925-443-5588.

The traffic going east on 580 might be heavy, so I can give an alternate route to Livermore through Pleasanton if anyone wants to go that way. There is also a road parallel to 580 going east that one can get on in Castro Valley. Best to carpool and have a map so there's a navigator for the driver dealing with traffic.

Charli Danielsen, charlid@pacbell.net

## FIELD TRIPS

Sunday, April 4, 2:00 pm, **Pioneer Tree Trail, Samuel Taylor State Park** (on Sir Francis Drake Boulevard in Marin County, near Olema)

**How to get there:** from San Francisco, cross the Golden Gate Bridge and continue on 101 North to the San Anselmo/Richmond Bridge exit (well past Sausalito). Take that exit, staying to the left and turn onto Sir Francis Drake Boulevard. From the East Bay, get on the Richmond/San Rafael Bridge, and take the second exit after reaching Marin County, onto Sir Francis Drake Boulevard. Stay on Sir Francis Drake Boulevard nearly across the county (the only even slightly confusing intersection is with Red Hill Road/Sir Francis Drake bends to the left immediately after the intersection). You enter Samuel Taylor State Park soon after passing through the town of Lagunitas (and soon after you enter redwood groves). Look for the park headquarters and main picnic area on the left, after a mile or two. Enter the headquarters area (there is a parking fee that must be paid whether or not the booth is staffed). Park in a space in the Picnic Area and walk across the bridge, taking a left past the group picnic area to the group picnic area parking lot, where we will meet.

The Pioneer Tree Trail is about two miles, with several hundred feet of elevation change. There are old growth redwoods (as well as logged groves) and early redwood forest flowers.

Please contact David Margolies (510-654-0283, divaricatum@aol.com) if you need further information.

Saturday April 10, 9:30 am, **Warm Springs Vernal Pools in San Francisco Bay National Wildlife Refuge** Sally Reynolds of the US Fish and Wildlife Service will

lead this half-day field trip to a site with some of the very few publicly owned vernal pools in the Bay Area. The sides of these pools will have rings of Contra Costa goldfields and *Downingia* along with other species found in wet grasslands. For those interested in grazing impacts, please note that 2003-04 has been the first winter in which the refuge used several head of cattle to graze exotic grasses on the upland areas of Warm Springs.

**How to get there:** Meet at the parking lot for the Don Edwards Visitor Center, where you can safely leave your car; parking is limited at Warm Springs, so carpools are a must. From points north of Fremont, take 880 South to the Dumbarton Bridge exit. Take 84 west to Paseo Padre Parkway, which is the last exit before the toll booths. Turn left onto Paseo Padre Parkway from the exit ramp, go over the freeway, and look for the refuge turnoff past the first stoplight after the overpass. Follow the turnoff into the refuge, which will lead to the parking lot. From Santa Clara County, take I-880 North either to the 84/Dumbarton Bridge exit, or you can take the Thornton Avenue exit further south on 880. Thornton will lead to the same refuge turnoff, but only after a longer drive through urban traffic.

April 11, Easter Sunday, **All day trip to Bear Valley/Carson Ridge in Colusa County**

Bear Valley/Carson Ridge is located just west of the intersection of Highway 20 and Highway 16, some miles west of Williams, California, which is on I-5, about 20 miles north of the I-5/I-505 intersection. To get there from the Bay Area, take I-80 to Vacaville and then I-505 North to I-5 North. Stay on I-5 to the Highway 20 west/Williams exit, and take Highway 20 west to the intersection of Highway 16. Meet at the intersection of Highway 20 and highway 16. We will take as few cars as possible into Bear Valley (and Carson Ridge). They roads in Bear Valley are dirt roads. We will meet at 10:00 pm at the intersection of Highway 20 and Highway 16. We will be in Bear Valley/Carson Ridge until the mid to late afternoon. Bring a lunch.

Please contact David Margolies (510-654-0283, divaricatum@aol.com) if you wish to go on this trip.

Sunday, April 18, 2:00 pm: **Mitchell Canyon in Mt. Diablo State Park**

One of the finest walks on Mt. Diablo

**How to get there:** from San Francisco, cross the Bay Bridge to Oakland. You want 580 East to 24 East. Stay in the right lanes, but do not take 880 South

San Jose exit. Once you are on 580 East proper, get in the rightmost lane and take the 24/Berkeley, Walnut Creek Exit. From the East Bay west of the hills, get on 24 East toward the Caldecott tunnel. Continue on 24 through the tunnel and into Walnut Creek, where it ends at I-680. Take the 680 North direction and **immediately** exit onto Ygnacio Valley Road. Take a right (onto Ygnacio Valley Road going east) at the light. Continue for several miles (for a while, it goes through open area) to Clayton Boulevard. Take a right and go to Mitchell Canyon Road (at a light). Take a right and continue to the end, where there is a parking lot (be sure to pay the fee if there is one). We will walk a mile or so up the canyon and then back. Later those interested can drive to the top and take the Fire Interpretive trail around the summit.

Please contact David Margolies (510-654-0283, [divaricatum@aol.com](mailto:divaricatum@aol.com)) if you need further information.

Saturday, April 21, 10-12 am, **Sunol-Ohlone Regional Wilderness**

Mary Ann Hannon will lead a 1-2 mile walk along the Ohlone Trail from the Visitor Center toward Mission Peak, just going to where the trail crosses Calaveras Road. The trail is a bit steep in places, but we will be stopping and looking for grassland species, enjoying some Oak Woodland and a small vernal pool, and possibly finding *Silene californica*. Bring \$4/vehicle for parking (or East Bay Regional Parks pass), water, snack or lunch. No food available at the park.

**How to get there:** From the junction of I-580 and I-680 in Pleasanton/Dublin, take 680 South. Exit at Calaveras Road/84. Go left on Calaveras Rd, continuing East until Geary Road. Turn left onto Geary. There are Park District directional signs also. Geary Road ends at the park. Meet at the Old Green Barn Visitor Center. Contact Mary Ann Hannon at 925-443-5588 if you need more information.

Sunday, May 2, 2:00 pm: **Bird Trail, Chabot Regional Park** again (see March 21)

---

## SPRING FAIRS AND SHOWS

Please join us for Spring Celebrations in your neighborhood or come explore a new region to help get our message out. Families are welcome - children have a good time at these events. Help for an hour or more would be very much appreciated. We have the props, we just need the people!

Saturday and Sunday, April 3 and 4, Oakland Museum

This short (about 1/2 mile, with insignificant elevation gain) trail is a botanically interesting transition zone between redwood forest and mixed evergreen (mostly oak/bay) forest. Now in the later spring, there will be columbine, solomon's seal, fritillary, trillium, and many shrubs.

The trail starts close to the MacDonald Staging Area in Chabot Regional Park off Redwood Road in Oakland.

**How to get there:** from San Francisco, take the Bay Bridge, staying to the right (**but do not go to San Jose**). Take I-580 East, and then 24 East (towards Walnut Creek). Take the 13 South exit from 24. From the East Bay, get on 13 South. Once on 13, take the Redwood Road exit. On Redwood Road, go east (uphill). At the top of the hill you will cross Skyline Boulevard and pass various equestrian facilities. Go down into the valley. About two miles from Skyline Boulevard, turn right into the MacDonald Staging Area parking lot. It is a large lot and you cross a bridge over a creek; there is a small lot about 1/4 mile to the north which is not the correct place; if coming from the north you reach the entrance to Redwood Regional Park on the left, you have gone about 1/4 mile too far.

Please contact David Margolies (510-654-0283, [divaricatum@aol.com](mailto:divaricatum@aol.com)) if you need further information.

Saturday, May 15, all day trip to **Mines Road** in eastern Alameda County

Meet at 10:00 am at the Dublin/Pleasanton Bart Station Parking Lot. We will organize into car pools. We will return to the meeting point around 5:00 pm. Bring lunch and stuff to drink.

To facilitate organization, please contact David Margolies (510-654-0283, [divaricatum@aol.com](mailto:divaricatum@aol.com)) to sign up for the trip. He will provide additional information. Maximum number on trip: 20.

Wildflower Show, featuring flowers from Southern California-10am to 5pm on Saturday and 12 noon to 5pm on Sunday [www.museumca.org](http://www.museumca.org)

Saturday, April 17, Regional Parks Botanic Garden Plant Sale in Tilden Park. Gates open at 10 am. Organized by the volunteers of the garden--plants from the world's largest collection of California native plants-

continued on page 6

## SPRING FAIRS AND SHOWS continued from p. 5

shrubs, trees, perennials, and some plants that you cannot find in a nursery will be for sale. We will have a membership/information table. [www.ebparks.org](http://www.ebparks.org)

Saturday, April 17, Berkeley Bay Festival CNPS and CESP (Citizens for Eastshore State Park) will join forces at this family event. We'll have images of native plants to color. We're looking for volunteers who like to work with children. The time commitment is short, just two hours in beautiful weather at the waterfront. Please contact Sarah Ginskey at 510-558-8139.

Saturday, April 24, West County Earth Day in Richmond 11 am to 3 pm. Games music art performances, food, organic gardening workshops. Takes place at the Integrated Resource Recovery Facility ie. the recycling center in Richmond. [www.recyclemore.com](http://www.recyclemore.com)

Saturday, April 24, 12 noon to 5 pm, Berkeley Earth Day 2004 (featuring National Dance Week celebrations on stage), Civic Center Park. This is the area's oldest and largest Earth Day Celebration which attracts 5000 people. [www.hesternet.net](http://www.hesternet.net)

April 28 and/or April 29, Moreau Catholic High School Earth Days in Hayward, 11am to 1pm. Information table with handouts and CNPS representative has been requested, lunch provided to participants. [www.moreaucatholic.org](http://www.moreaucatholic.org)

For information and to help, please contact Delia at 510-527-3912 or [deliataylor@mac.com](mailto:deliataylor@mac.com).

---

## PLANT SALE ACTIVITIES

### Propagating and Potting Sessions:



Tuesdays  
April 6, 13, 20, 27  
9 am to 2 pm  
Merritt College, Oakland  
Landscape Horticulture  
Parking fee: 50 cents

Our April work sessions will keep us busy potting into soil the cuttings of shrubs rooted in the greenhouse. Taking their places inside will be the new cuttings of perennials we do this month.

Join us. Everyone is welcome for all or part of the morning.

Bring a bag lunch if you can stay for the noon break. For more information: 925-376-4095

---

## NATIVE HERE NURSERY

Fridays, April 2, 9, 16, 23, 30: Native Here Nursery open 9-noon

Saturdays, April 3, 10, 17, 24: Native Here Nursery open 10-1

Wednesday, April 21: Conservation Committee Meeting, Livermore

We have a variety of volunteer opportunities: Seed sowing on April 3 and 4th, dividing seedlings and putting them into pots, weeding, labeling, and helping put the finishing touches on the space added to the nursery.

Drop by when the nursery is open, or leave a message stating what you'd like to help with and when you are available, either by phone at the nursery 510-549-0211 or to Charli by e-mail [charlid@pacbell.net](mailto:charlid@pacbell.net). Volunteers are always needed whenever the nursery is open: Fridays, 9 to noon, and Saturdays 10 am to 1 pm. No need to phone ahead, just show up at 101 Golf Course Drive in Tilden Park (across from Golf Course Main Entrance).

It is time to let Native Here know your wishes for species you'd like to plant in the fall of '05! We will start collecting seeds next month, and your "wish lists" will help us decide where and when to collect.

Come by the nursery to see if any six packs of annuals are available. It's not the best time to be putting trees and shrubs in the ground, but annuals, herbaceous perennials and bulbs, with some extra care, should work fine.

How about a Calendar starting with the spring equinox? Perfect Equinox or Easter gift with photos by Tony Morosco.

Books are also available at the nursery: Barbara Ertter's Annotated Checklist of the East Bay Flora is a great help on those spring walks. Vegetation Management Almanac for the East Bay Hills helps you to plan your assault on the weeds that are starting to emerge, and to plan your year-round maintenance for fire safety, Dianne Lake's Rare, Unusual and Significant Plants of Alameda and Contra Costa Counties is also available, as is Aquatic Outreach Institute's Gardener's Guide.

*Charli Danielsen*

## NATIVE PLANT RESTORATION TEAM

E-mail reminders: Please contact Jim Sharp at [itsa@dnai.com](mailto:itsa@dnai.com) to receive a reminder message the week prior to Native Plant Restoration Team events.

For March's work day we joined SPAWNERS at the El Sobrante Library. About 20 people spent a couple of hours (and a lot of muscle) removing mounds of Algerian ivy from the slope leading to San Pablo Creek to prepare the area for planting with native plants. What a satisfying

feeling to free a lone, struggling native blackberry (*Rubus ursinus*) from a sea of ivy and give it some breathing room! Touring the thriving Native Plant Demonstration Garden at the same

site, we were able to admire the transformation from an ivy monoculture accomplished by SPAWNERS' dedicated volunteers in barely four years.

Saturday, April 3, 9:30 am - noon. **Mouth of Strawberry Creek, Eastshore State Park, Berkeley**

Join Friends of Strawberry Creek removing perennial pepperweed and other invasives at the creek mouth and nearby Brickyard Peninsula. Learn about plans to restore the cove and other nearby park areas.

**Directions:** Meet at the cove behind (west of) Sea Breeze Market, University Avenue and Frontage Road. Drive down University Avenue or take the University Avenue exit west from I-880/580. Park in the large parking area near the market; small trails lead west through coyote brush to the shore. The 51M bus, on

University Avenue, stops just across the street from the market.

For more information contact Susan Schwartz, 510-848-9358 or [f5creeks@aol.com](mailto:f5creeks@aol.com).

Saturday, May 1, 9:30 am – noon. **Codornices Creek at Live Oak Park, Berkeley**

Help Friends of Five Creeks remove ivy and tend natives planted last fall north of Codornices Creek between Oxford and Walnut Streets, east of the Berkeley Art Center. Visit the gallery while you're there.

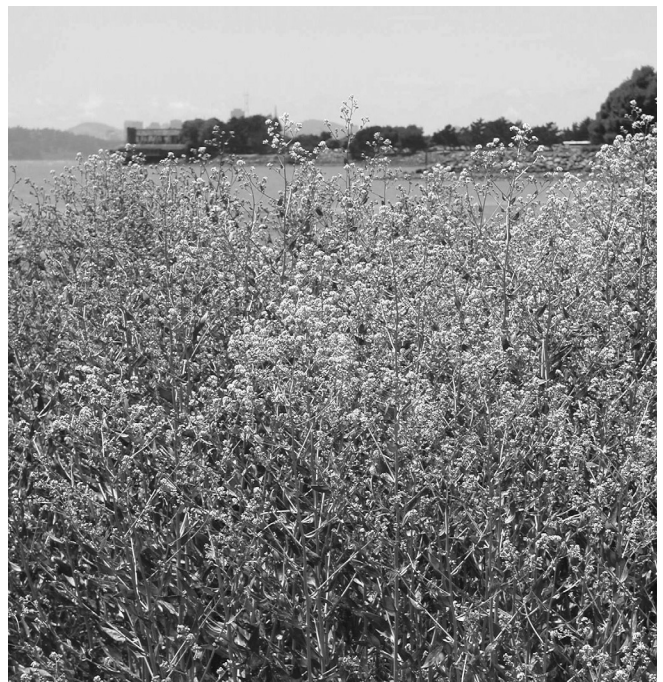
**Directions:** Meet at the picnic area between Oxford and Walnut Streets. Park on Oxford or Walnut Street midway between Eunice and Rose Streets; enter the park on signed Berryman Path. You will see the picnic area or, if you come later, the group working on the other side of the creek. Cross the wooden bridge leading to the Art Center to reach the site. By bus, from downtown Berkeley take the 67 to Oxford and Rose and walk north on Oxford, or take the 9, 43, or 72 to Henry and Rose, walk east on Rose to Walnut, and then north on Walnut.

For more information contact Susan Schwartz, 510-848-9358 or [f5creeks@aol.com](mailto:f5creeks@aol.com).

Questions or comments? Please call Sarah Ginskey at 510-558-8139.



Compressing bagged-up ivy at Live Oak Park, Berkeley



Pepperweed at mouth of Strawberry Creek before removal began

## CALIFORNIA WILDFLOWER SHOW

Armchair botanists and flower lovers are invited to greet the month of April with a visit to the Oakland Museum of California's 35th Annual California Wildflower Show, on Saturday, April 3, from 10 a.m. to 5 p.m. and Sunday, April 4, from noon to 5 p.m. On view will be between 150 and 200 species of freshly gathered spring wildflowers, all of them native to California.

Each year's California Wildflower Show features native flowers gathered in the field, brought into the museum and sorted, identified and labeled by botanists. Tuesday, Wednesday and Thursday before the show, museum staff members and volunteers will travel south along the California Coast Range to gather wildflowers for this year's display. Flowers will be collected from sites on the coast and coastal mountain range from the San Francisco Bay Area south to Santa Barbara, and inland along the mountains and high desert of the Los Angeles Basin. Threatened or endangered species are not collected.

Friday, botanists from the Jepson Herbarium of the University of California, Berkeley, along with other experts, will identify the species collected. Volunteers will arrange the flowers in the museum's Natural Sciences Gallery Side Bays, and a staff member of the University of California Botanical Garden will compose mixed wildflower bouquets for the exhibition.

"The reason for doing the show," says the museum's Chief Curator of Natural Sciences Tom Steller, "is to give people an opportunity to see up close the huge diversity of wildflowers in California. I don't believe there's any other show in the state that brings together as many native species that are nonlocal."

In order to achieve this diversity, the exhibition, which for a number of years had been held on Mother's Day weekend, now takes place at different times of the year. "There are major flower blooms from March to the end of the summer," says Steller. "To truly sample the diversity, flowers must be collected from different parts of the state at various times of the year. We try to collect when the greatest variety of flowers is in bloom in a particular area."

The collecting area for this year's exhibition, between the ocean and the west side of the Central Valley, from the northern Bay Area to Santa Barbara, includes a variety of habitats. Collectors will gather flowers from the coastal dunes, hosts to low-growing, salt-resistant plants; grasslands, which support most of the wild-

flowers that California is famous for, such as poppies, baby blue eyes and lupines; chaparral, home of water-conserving plants like our Lord's candle, a yucca with a stalk of creamy white flowers rising five to six feet above its nest of spiky leaves; oak woodland communities with dogwood and redbud bushes and wildflowers growing in the open spaces between the trees; and the high desert, where they may find locoweed and Joshua trees with their clusters of white-green flowers.

Text panels in the exhibition will describe flower features useful in identification as well as the characteristics of major flower families represented. California Native Plant Society volunteers will be on hand during the two-day show to answer questions. Visitors can learn about using native species in their gardens and conserving the botanical diversity that is found in the state, and can acquire information about existing threats to native wildflower populations and about organizations devoted to California's native plants.

Magnifying glasses distributed among the tables will provide closer looks at the often complex and fascinating structures of the flowers. Microscope stations, staffed by volunteers, allow closer observation of flowers, flowers dissected to reveal their hidden parts and, occasionally, insect inhabitants of the flowers.

The Annual California Wildflower Show is organized by the Natural Sciences Department of the Oakland Museum of California in collaboration with the California Native Plant Society, which monitors the collecting; the Jepson Herbarium of the University of California, Berkeley; the University of California Botanical Garden; and the Strybing Arboretum. It is presented with the support of the East Bay Municipal Utility District, the Natural Sciences Guild and members of the Oakland Museum of California.

The Oakland Museum of California is devoted to the environment, history and art of the state. The museum is located at Oak and 10th Streets in downtown Oakland, one block from the Lake Merritt BART station and four blocks from Highway 880. Museum hours are Wednesday through Saturday, 10 a.m. to 5 p.m.; Sunday, noon to 5 p.m.; first Friday of the month open until 9 p.m. Admission is \$8 for adults, \$5 seniors and students with ID, free for children five and under. Free admission the second Sunday of the month. For more information, call 510/238-2200 or visit the museum web site at [www.museumca.org](http://www.museumca.org).

## ACTIVITIES OF OTHERS

**CHIA** (California Habitats Indigenous Activists) is planting mostly local grasses and flowers on the BART trail in Berkeley trying to recreate a grassland/coastal prairie habitat. Our project is supported by The East Bay Chapter of CNPS and is in its fourth year. We have work party meetings once a month and we would like to invite people to either talk or work with us on the project. The work parties are usually on the fourth Saturday of the month.

The trail is located adjacent to the Peralta Garden in Berkeley on the Ohlone Greenway. The closest house address is: 1406 Peralta Street Berkeley 94702. We invite people to stop by the Greenway and the Peralta Garden (which also features CA native plants) on April 24 and May 22, from 11 am – 1 pm.

### **California Native Grass Association**

Thursday-Saturday, April 22-24, approximately 7:30 am to 5pm

Modesto Convention Center and Modesto Doubletree, 1150 Ninth Street, Modesto

Thursday, April 22, tuition based workshops open for pre-registration and the CNGA Board meeting.

Friday, April 23, technical sessions - Native Grasses and Graminoids: Tools for Protecting Water Quality

Saturday, April 24, field experiences

Registration packets were mailed to CNGA members during the first week of March, 2004. Non-members should contact [admin@cnga.org](mailto:admin@cnga.org) to request registration information.

On Thursday, April 15, 7-9 pm, at the Oakland Museum of CA Lecture Hall, **Close to Home** kicks off the second year of its program with a tribute to the visionaries who fought for the preservation of the green space and the reclaiming of the Bay that we enjoy today: *How Human Imagination Has Shaped the Landscape of the East Bay Hills: Legacy of the Visionaries: East Bay Parks, Save the Bay, Save Mount Diablo*. We'll also introduce the year-long Close to Home program that begins on May 3. You can sign up for 12 talks and 12 field trips led by some of the best-known guides in the East Bay. For more information, please see [www.close-to-home.org](http://www.close-to-home.org) or call Cindy Spring 510-655-6658.

**Berkeley Bay Festival**, Saturday, April 17, 12:00 - 5:00 p.m. The CNPS East Bay Chapter Native Plant Restoration Team and the Citizens for the Eastshore State Park will share a table.

This exciting fair is very kid oriented and we will offer children a chance to learn about native plants in the Eastshore State Park by having them color in hand drawn drawings of native plants found in the Eastshore State Park. We will also have drawings of birds in the Park. We are looking for volunteers to help staff our table at the Fair, especially people who are fond of working with kids. The time slots are fairly short. What could be more fun than spending a day in beautiful weather in the Eastshore State Park at the shoreline?

There will be lots of other groups at the Festival, too, so you'll get a chance to wander around and check out their booths and learn about all the different plans for different parts of the park. Contact: Tina, Media and Communications Coordinator, Citizens for the East-

*Either we have hope within us or we don't.*

*It is a dimension of the soul and is not essentially dependent on some particular observation of the world.*

*It is an orientation of the spirit, an orientation of the heart.*

*It transcends the world that is immediately experienced and is anchored somewhere beyond its horizons.*

*Hope in this deep and powerful sense is not the same as joy that things are going well or willingness to invest in enterprises that are obviously headed for early success,*

*but rather an ability to work for something because it is good, not because it stands a chance to succeed.*

*Hope is definitely not the same thing as optimism.*

*It is not the conviction that something will turn out well, but the certainty that something makes sense regardless of how it turns out.*

Vaclav Havel



## Board of Directors

### Elected Officers

**President:**

Joe Willingham, 2512 Etna St., Berkeley 94704, 841-4681, pepe1066@comcast.net

**Vice President, Administration:**

Laura Baker, 79 Roble Road, Berkeley, 94705, 849-1409, Lbake66@aol.com

**Treasurer:**

Holly Forbes, 7128 Blake St., El Cerrito 94530, 234-2913, w/643-8040

**Secretaries:**

Recording:

Barbara Malloch Leitner, 2 Parkway Ct., Orinda 94563, 925-253-8300, bleitner@pacbell.net

Corresponding:

Nathan Smith, 545 Everett St., El Cerrito, 94530, 559-8286, ncsmith@berkeley.edu

Tony Morosco, berkbotanist@onebox.com

### Bay Leaf Editor

Joe Willingham, 2512 Etna St., Berkeley 94704, 841-4681, pepe1066@comcast.net

### Committee Coordinators

**Bay Leaf Mailing:**

Holly Forbes, 7128 Blake St., El Cerrito 94530, 234-2913, w/643-8040, hforbes@uclink4.berkeley.edu

**Book and Poster Sales:**

Vacant

**Bryophytes:**

Dan Norris, 802 Lexington Ave., El Cerrito 94530, 435-2004, dhnorris@uclink.berkeley.edu

**Conservation:**

Vacant

**East Bay Public Lands:**

Peter Rauch, 526-8155, peterr@socrates.berkeley.edu

**Education:**

Vacant

**Field Trips:**

Janet Gawthrop, 360 Monte Vista Ave. #214, Oakland 94611, 654-3066, \_janetg24@excite.com

**Grants:**

Sandy McCoy, 1311 Bay View Place, Berkeley 94708, wbmccoy@earthlink.net

**Hospitality:**

Irene Wilkinson, 440 Camino Sobrante, Orinda 94563, 925-254-3675

### Committee Coordinators

**Media:**

Elizabeth Bade, 2151 Carrol Rd., Walnut Creek 94596, 937-8006

**Membership:**

Delia Taylor, 1851 Catalina Ave., Berkeley 94707, 527-3912, deliataylor@mac.com

**Native Here Nursery:**

Charli Danielsen, 101 Golf Course Dr., Berkeley 94708, 549-0211, charlid@pacbell.net

**Native Plant Restoration Team:**

Sarah Ginskey, 1096 Miller Avenue, Berkeley 94708, 558-8139

**Plant Communities:**

Susan Bainbridge, 2408 Parker St., Berkeley 94704, 548-2918, suebain@SSCL.Berkeley.EDU

**Plant Sale:**

Shirley McPheeters, 104 Ivy Dr., Orinda 94563, 925-376-4095  
Phoebe Watts, 1419 Grant St., Berkeley 94703, 525-6614, phwatts@cs.com

**Plant Sale Publicity:**

Elaine Jackson, 3311 Estudillo St., Martinez 94553, 925-372-0687, elainejx@mindspring.com

**Posters:**

Vacant

**Programs:**

Sue Rosenthal, P.O. Box 20489, Oakland 94620, 496-6016, rosacalifornia@earthlink.net

**Rare Plants:**

John Game, 1155 Spruce St., Berkeley 94707, 527-7855, jcggame@lbl.gov

**Regional Parks Botanic Garden Liaison:**

Sue Rosenthal, P.O. Box 20489, Oakland 94620, 496-6016, rosacalifornia@earthlink.net

**Unusual Plants:**

Dianne Lake, 1050 Bayview Farm Rd. #121, Pinole 94564, 741-8066, diannelake@yahoo.com

**Recorded Chapter Information: 464-4977**

**CNPS Home Page:** [www.cnps.org](http://www.cnps.org)

**East Bay Chapter CNPS Home Page:**

[www.ebcnps.org](http://www.ebcnps.org)

**Bay Leaf &**

**Board meeting minutes online**

**Chapter CNPS-EB-Alerts E-mail List:**

Find out more; email to [listserv@usobi.org](mailto:listserv@usobi.org) with:

**INFO CNPS-EB Alerts**

### Membership Application

Name \_\_\_\_\_

Address \_\_\_\_\_

Zip \_\_\_\_\_ Telephone \_\_\_\_\_

I wish to affiliate with:

East Bay Chapter (Alameda and Contra Costa Counties)

Other \_\_\_\_\_

E-mail \_\_\_\_\_

(optional)

**Membership category:**

Student, Retired, Limited income, \$20

Individual, Library, \$35

Household, Family, or Group, \$45

Supporting, \$75

Plant lover, \$100

Benefactor, \$500

Life, \$1000

Mail application and check to: California Native Plant Society, 2707 K Street, Suite 1, Sacramento CA 95816

---

**California Native Plant Society  
East Bay Chapter  
P.O. Box 5597, Elmwood Station  
Berkeley CA 94705**

**Nonprofit Org.  
U.S. Postage  
Paid  
Oakland, CA  
Permit No. 2018**

**Time Value  
April 2004 issue**